

# eating made easy

Study Hard, Eat Well



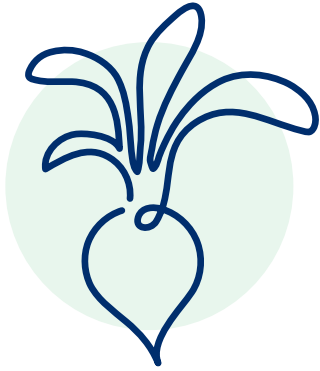
[www.sru.edu/dining](http://www.sru.edu/dining)

# Choose Less Stress

---



eating  
made  
easy



## ONLY THE BEST

Chef-inspired, on-trend menus featuring fresh, quality ingredients



## TOOLS TO THRIVE

Well-balanced, transparent menus to navigate healthy options with ease



## ALL FOR YOU

Perfectly personalized to fit your life

# *Ace Your Appetite*



**ALL YOU CARE TO EAT**  
Boozel Dining Hall



**ON THE GO**  
Locations all across campus



Smith Student Center

GREENS TO GO



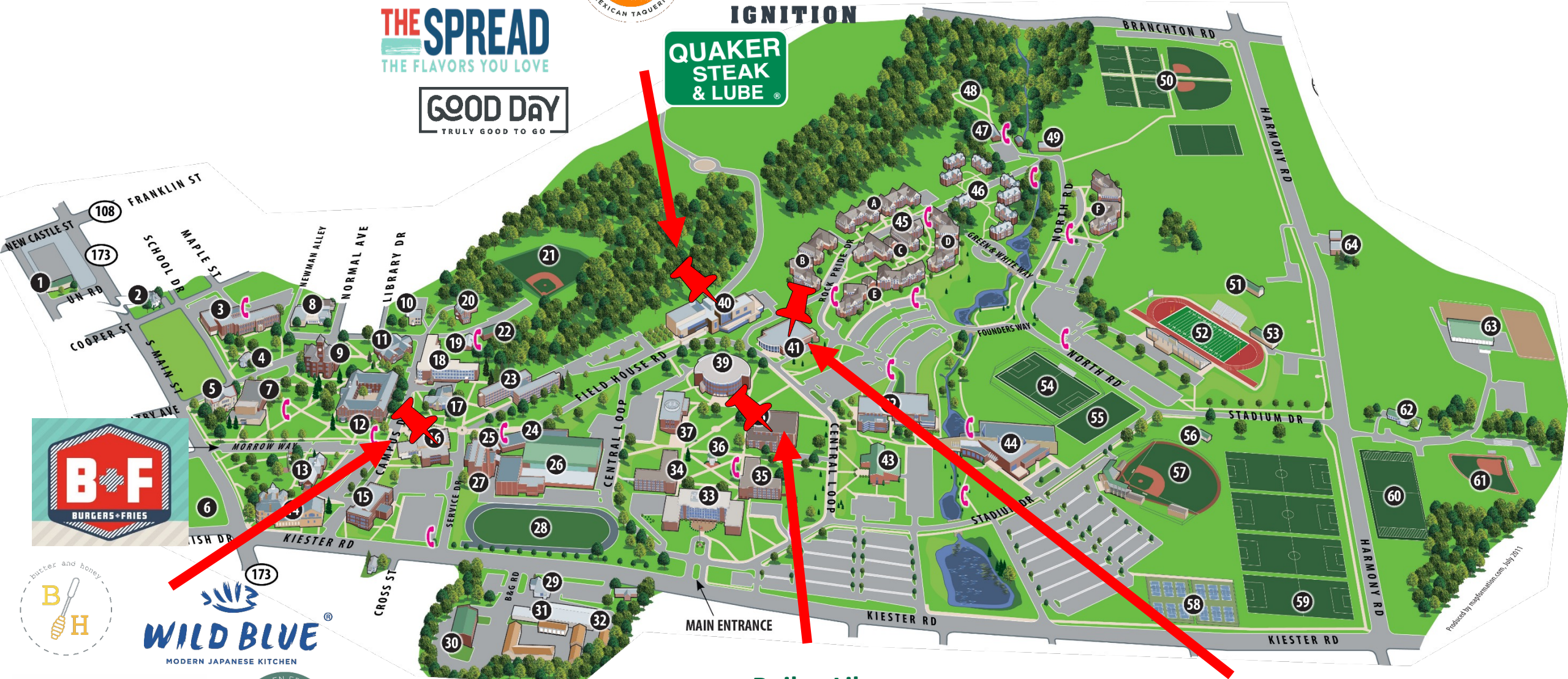
Starbucks

THE SPREAD THE FLAVORS YOU LOVE

PASCA PIZZA IGNITION

GOOD DAY TRULY GOOD TO GO

QUAKER STEAK & LUBE



WILD BLUE MODERN JAPANESE KITCHEN



CRAFTED COMMONPLACE COFFEE

WEISENFLUH

Bailey Library Starbucks We Proudly Serve

Boozel Dining Hall and Boozel Express

Produced by mapfrommiami.com July 2011

# *Student Favorites*

---



eating  
made  
easy



# Boozel Dining Hall

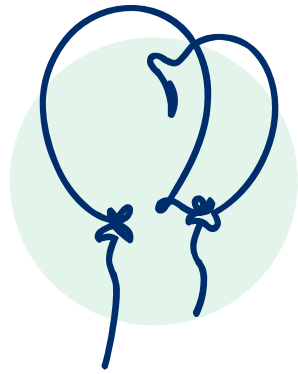


**KEYSTONE**  
*Baking* CO.

**LOCAL**  
  
**HARVEST**

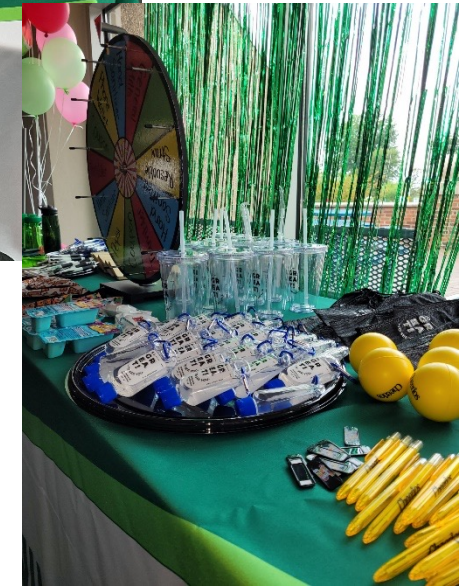
  
**SLIPPERY**  
**ROCK**  
CREAMERY  
BY KEYSTONE BAKING CO.

# More to Explore



## SPECIAL EVENTS

Student-focused events that bring the campus community together



- Theme Nights
- Cooking Classes
- Paint Nights and more



eating  
made  
easy

# More to Explore



## **SUSTAINABILITY**

Green Team of student  
Sustainability Interns



## **LOCAL PARTNERSHIPS**

Local products, guest chefs  
and restaurant partnerships





# Eat Well

---



eating  
made  
easy



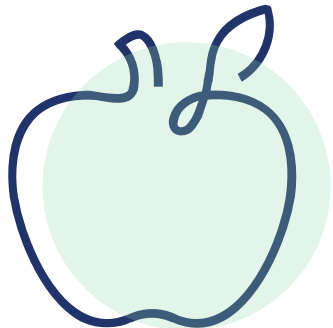
**HEALTH  
BAKED IN**



**FOOD THAT FITS  
YOUR LIFE**



**ACCESS AT YOUR  
FINGERTIPS**



**FEED YOUR POTENTIAL 365**

Visit **fyp365.com** for nutrition news, healthy ideas  
and inspiration from our chefs and experts.

# Special Dietary Needs

---



eating  
made  
easy



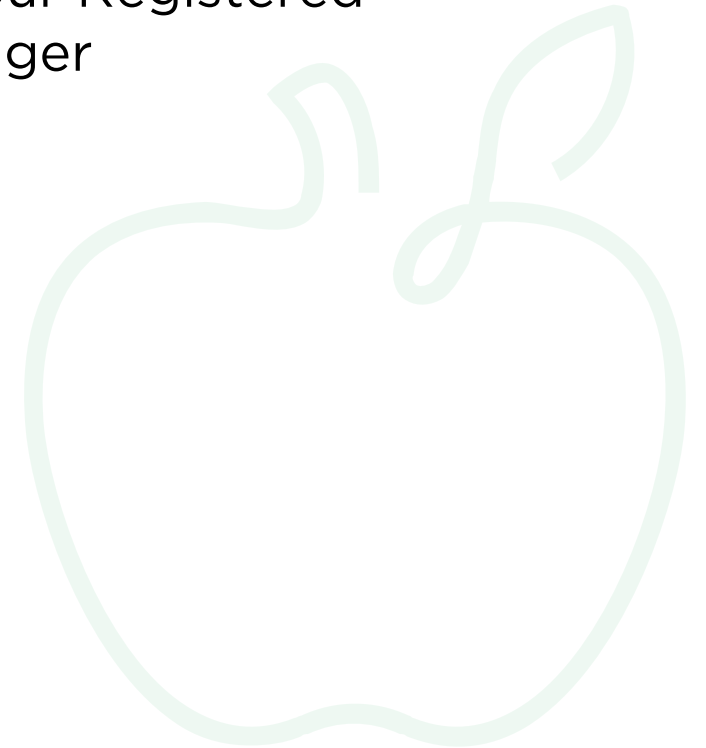
## YOUR ON-CAMPUS RESOURCE

Reach out to meet with our Registered Dietitian or General Manager

Contact us at:

[dining@sru.edu](mailto:dining@sru.edu)

or 724-738-2038



# Dining Safety

---



eating  
made  
easy



**SAFE  
ENVIRONMENTS**



**EMPLOYEE  
TRAINING**



**PRODUCT  
SAFETY**





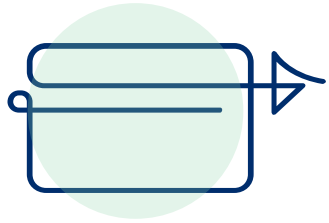
*Meal Plans*

# Know Your Perks

---

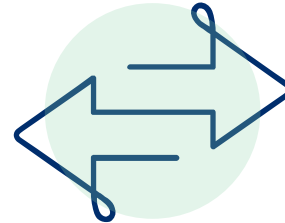


eating  
made  
easy



## **MEAL SWIPES & Meal Exchange**

All you care to eat at Booze! Dining Hall and for a meal at select retail locations



## **Cash Equivalency**

Use your plan on-the-go at select retail locations, the current exchange rate is \$6.40



## **FLEX DOLLARS**

Use at all locations



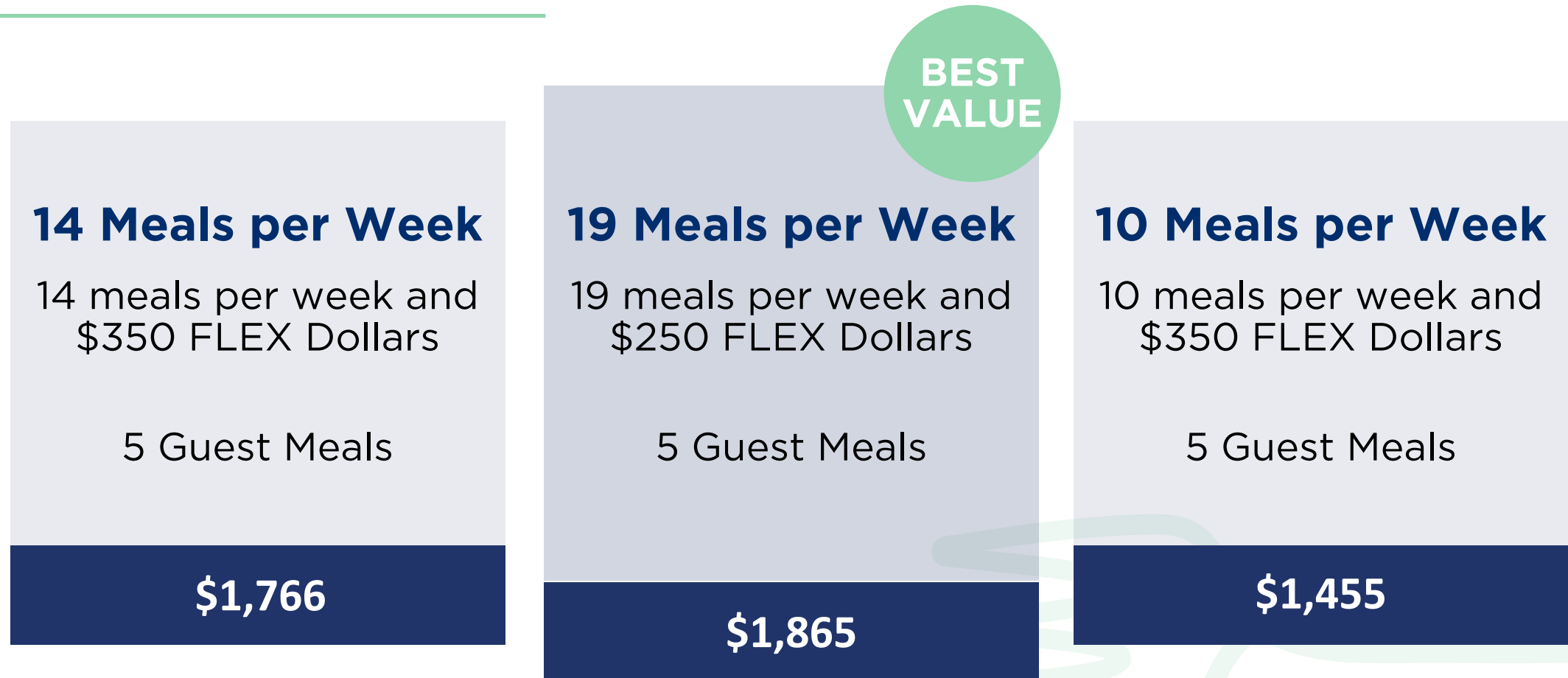
## **GUEST MEALS**

Treat friends and family  
Each meal plan comes with 5 guest meals

# Find Your Fit – our most popular on campus plans



eating  
made  
easy



Meal plan pricing is per semester  
Current 24/25 pricing is shown

# Off-Campus Students – our most popular off campus plans



eating  
made  
easy

## 7 Meals per Week

7 meals per week and  
\$100 FLEX Dollars

5 Guest Meals

**\$879**

## 75 Meals per Semester

75 meals per semester  
and \$100 FLEX Dollars

5 Guest Meals

**\$626**

Meal plan pricing is per semester  
Current 24/25 pricing is shown

# Meal Plans

| Plan                        | Meals per week/semester | FLEX               | Current 24/25 cost per semester |
|-----------------------------|-------------------------|--------------------|---------------------------------|
| 19                          | 19 per week             | \$250              | \$1,865                         |
| 14                          | 14 per week             | \$350              | \$1,766                         |
| 10                          | 10 per week             | \$350              | \$1,455                         |
| 175                         | 175 per semester        | \$350              | \$1,534                         |
| 7<br>Off Campus Only        | 7 per week              | \$100              | \$879                           |
| 75<br>Off Campus Only       | 75 per semester         | \$100              | \$626                           |
| All FLEX<br>Off Campus Only |                         | \$250/\$500/\$1000 | \$250/\$500/\$1000              |







# How to Sign Up

## **ONLINE**

My Housing/My Dining Portal at  
<https://reslife.sru.edu>

## **In Person**

Visit the Dining office at 102 Smith  
Student Center for assistance.

All Meal Plans are billed to student  
accounts.

# Important Dates

---



eating  
made  
easy

July  
1

**First Day to Sign Up for a Meal Plan**

AUG  
22

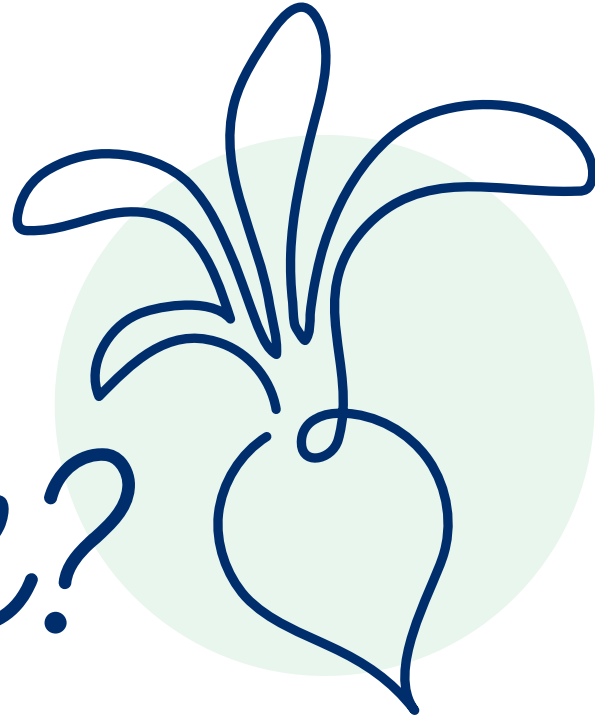
**MEAL PLANS BEGIN**  
For Fall semester

SEP  
8

**LAST DAY TO CHANGE**  
Fall meal plan

**SIGN UP Here:** My Housing/My Dining Portal at <https://reslife.sru.edu>

*Questions?*



**Contact Us: [dining@sru.edu](mailto:dining@sru.edu) or 724-738-2038**



**@RockDining**